

MONTHLY MEMBERSHIP PROGRESS REPORT

LOCATION MASSACHUSETTS

District 33 K

Results as of: 6/30/2023

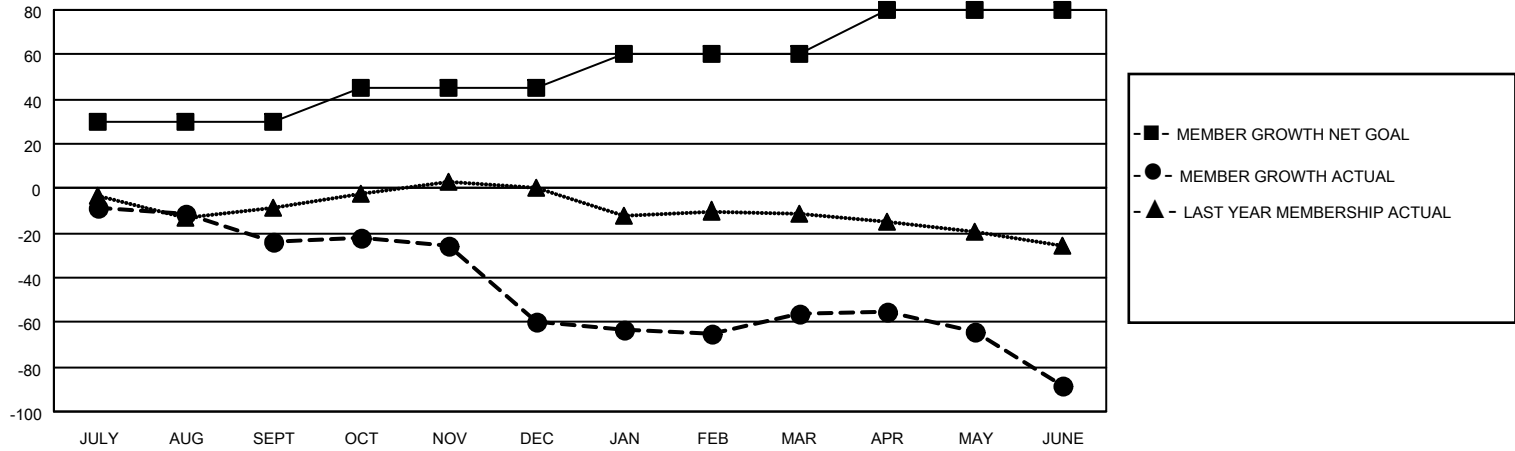
Clubs			
RESULTS FOR 2022-2023			
QUARTER	NEW CLUB GOAL	NEW CLUBS	DROPPED CLUBS
JULY/AUG/SEPT	0	0	0
OCT/NOV/DEC	1	0	0
JAN/FEB/MAR	0	0	0
APR/MAY/JUNE	0	0	0

Members			
RESULTS FOR 2022-2023			
QUARTER	MEMBER GROWTH NET GOAL	MEMBER GROWTH ACTUAL	DROPPED MEMBERS ACTUAL (including transfers)
JULY/AUG/SEPT	30	8	32
OCT/NOV/DEC	15	34	66
JAN/FEB/MAR	15	26	20
APR/MAY/JUNE	20	36	65

GOALS AND ACTUAL NEW CLUBS CUMULATIVE



GOALS AND ACTUAL MEMBERS CUMULATIVE



DROPPED CLUBS: 0	
<u>DROPPED MEMBERS</u>	
DECEASED	24
CLUB CANCELLED	0
OTHER	159
TOTAL	183

25 CLUBS OF 47 ADDED 1 OR MORE NEW MEMBERS

[CLICK HERE FOR CUMULATIVE MEMBERSHIP DATA](#)

<u>GENDER DISTRIBUTION</u>	
MALE	964 (63.67%)
FEMALE	549 (36.26%)
NON BINARY	0 (0.00%)
PREFER NOT TO ANSWER	1 (0.07%)
TOTAL FAMILY UNIT MEMBERS	
	200
FAMILY MEMBERS PAYING HALF DUES	
	100